



HP Designjet Z3200 Photo Printer series



This 12-ink HP Designjet, with new HP 73 Chromatic Red ink, delivers long-lasting gallery-quality prints in black and white and color. It enables easy calibration and profiling with its embedded spectrophotometer¹ and also delivers great ink efficiency².

Produce gallery-quality black-and-white and color prints

- Color and black-and-white print permanence of 200 years³ on a range of HP and HP Hahnemühle papers.
- Beautiful black-and-white prints have smooth transitions, true neutral grays thanks to the HP Quad-black ink set.
- Get exceptional gloss uniformity and minimize bronzing on most glossy photo papers with HP Gloss Enhancer.⁴
- This printer's expanded color gamut achieves 95% PANTONE[®] coverage⁵ enabled by its new chromatic red ink.
- Over 50 HP papers supported, from photo and fine art papers to coated and display-graphic printing materials.

The HP Designjet Z3200 Photo Printer series is ideal for professional photographers, digital fine artists, print service providers, graphic designers, and pre-press professionals who want to create:

- Gallery-quality prints
- Portraits
- Limited editions
- Albums
- Art reproductions
- Large-format designs
- Proofs

Easily calibrate and profile with HP DreamColor Technologies

- Calibration and profiling are made simple with HP DreamColor Technologies and embedded spectrophotometer.¹
- Expect consistent color from print to print regardless of fluctuating environmental conditions.
- Simplify workflows: easily access, create, and share paper presets⁶ using the enhanced HP Color Center.
- Get questions answered with the HP Knowledge Center, and control color settings with Adobe[®] Photoshop[®].⁷

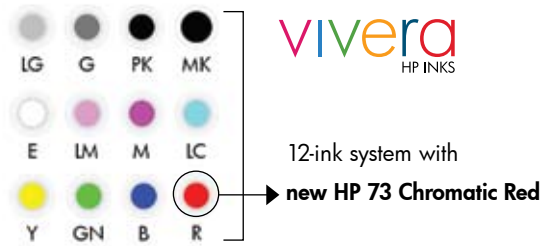
Achieve productive operation and great ink efficiency²

- Expect always-on quality with proactive automatic servicing routines that result in great ink efficiency.²
- Optical Drop Detector (ODD) prevents nozzle clogging—and, as a result, printing errors and media waste.
- Rich, dark blacks on matte and glossy papers—and you don't have to swap cartridges.
- This printer contains an HP Embedded Web Server, print previews, and other efficiency-enhancing features. Embedded TIFF, JPEG, and Adobe PS3/PDF RIP—enables direct job submission, queuing, nesting capabilities⁸ for a more efficient operation so you save time and money.
- Preserve resources and your budget. Predictable, reliable printing leads to more efficient printing, which is good for your business and can reduce the impact of printing on the environment.

WHAT DO YOU HAVE TO SAY?

Create leading gallery-quality black-and-white and color prints with the Vivera Color Ink System

COLOR



12-ink system with
new HP 73 Chromatic Red

- Excellent gloss uniformity and minimal bronzing on glossy and semi-glossy papers thanks to HP Gloss Enhancer

B&W

Competition's 3-black system



- Composite grays are not truly neutral
- Metamerism

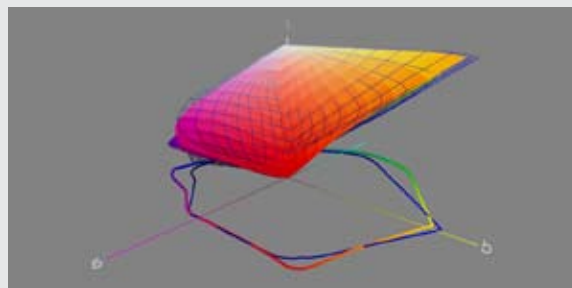
HP Quad-black inks



- Neutral grays
- True rich deep blacks

NEW RED

- The new HP 73 Chromatic Red ink provides a wide color gamut that meets the needs of photographers, graphic artists, and pre-press professionals alike.



The color gamut chart above shows in detail the wider gamut of reds that the HP Designjet Z3200 Photo Printer (in solid) achieves in comparison to one of its competitors. HP Premium Instant-dry Gloss Photo Paper was used for the demonstration.

Easy calibration and profiling

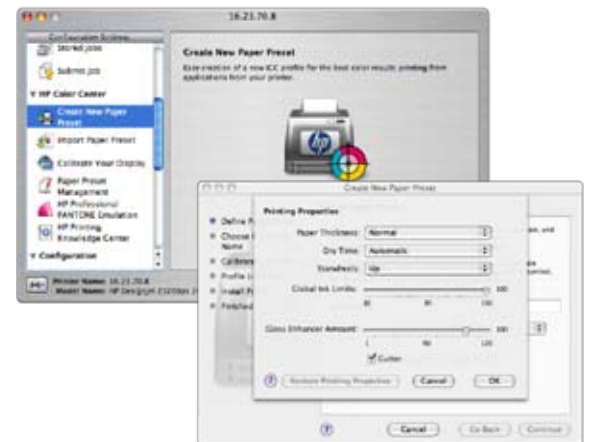
The Designjet Z3200's built-in X-Rite spectrophotometer and HP printer linearization and profiling software take the cost, effort, and guesswork out of printer color management. You are never more than a few mouse clicks and 20 minutes away from a professional ICC profile customized for your printer, paper, and environmental conditions. Custom HP profiles make the most of your Designjet's extended color gamut in reds, blues, and greens whether using matte fine art paper, satin or glossy photo paper, canvas, backlit film, or any of a wide range of other compatible substrates. Perfectly neutral black-and-white prints with extended tonal range, fine shadow detail, and continuous tone appearance are all unlocked by custom HP printer profiles.

Add the optional HP/X-Rite Advanced Profiling Solution (standard on PostScript® models) for additional flexibility and functionality such as monitor calibration and profiling, RGB and CMYK printer profiling, profile verification, and profile editing.⁸

Simplify workflows—easily access, create, and share paper presets using the enhanced HP Color Center

An enhanced HP Color Center offers a single point of control for all color-related functions.

From there, you can download or easily create your own Paper Presets, and have the option of more control using advanced settings.



Visit www.hp.com/go/Z3200/paperpresets to find paper presets for HP and other commercially available media.

“Neutral grays and color accuracy are of the utmost importance to my clients. They are very aware of the progress that has been made in digital printing and know that I’m at the forefront of the market. Yet when they see the prints from the HP Designjet Z3200, they are astonished at the incredible quality.”

Jack Lowe,
 Proprietor, Jack Lowe Studio, Newcastle upon Tyne,
 England



HP Designjet Z3200 PostScript printer at a glance

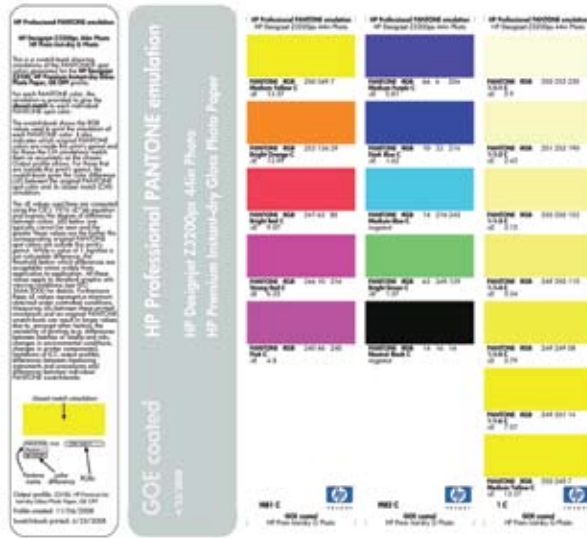
	Additional features	Benefits
Save costs	Automatic nesting with margin controls	<ul style="list-style-type: none"> Optimize use of media when printing several images
	In-printer processing with embedded TIFF, JPEG, and Adobe PS3/PDF RIP	<ul style="list-style-type: none"> Free-up your computer processing time Print 16-bit TIFF and JPEG images with HP Embedded Web Server's 16- to 8-bit LCED color converter
Advanced color management options	HP Advanced Profiling Solution	<ul style="list-style-type: none"> Calibrate your computer monitor (1 display calibration device included) Edit RGB and CMYK ICC profiles More color patches for more sophisticated ICC profiles
	HP Professional PANTONE Emulation	<ul style="list-style-type: none"> Accurately achieve in-gamut colors and properly reproduce out-of-gamut colors Print customized spot color simulation swatch books for the media of your choice
Enhanced for workgroups and remote management	<ul style="list-style-type: none"> Driverless direct job submission Queuing Storage of files 	<p>Manage the printer remotely using HP Embedded Web Server:</p> <ul style="list-style-type: none"> Send print jobs to the printer without having to open the image from an application, from any computer (no driver needed). Easily manage your print job queue. Store jobs—with various print settings—on the printer for easy, frequent re-prints without ripping

HP Professional PANTONE Emulation

With 95% coverage of PANTONE colors, you can produce accurate spot-color proof prints for your design projects using the HP Designjet Z3200 PostScript printer.

- Assign PANTONE color names to graphical elements in your PS/PDF-capable design application, and have the printer automatically generate matching in-gamut colors and visually optimized equivalents for out-of-gamut colors, using a specific spot color rendering intent not available from standard ICC profiles*.
- Automatically create your own PANTONE swatch book illustrating the closest available match to PANTONE colors for the print medium selected. The printed color swatch comes with a numerical indication of how closely colors match, and the included device color values make it easier to create customized emulations for applications that do not support named colors completely**.

See www.hp.com/go/Z3200/PANTONE for detailed information about this printer's PANTONE coverage.



* For HP Professional PANTONE Emulation to work correctly, design applications must allow the assignment of the correct color name to design elements, and the name must be preserved intact in the PostScript or PDF file passed to a supported RIP with embedded HP Professional PANTONE Emulation technology. Since ink values are calculated based on colorimetric information present in an ICC profile, a correct and up-to-date ICC profile is required for the specific printer, inks, and media being used.

** These may be RGB or CMYK values, depending on your workflow.



HP Designjet Z3200 Photo Printer series

Technical specifications

Print speed ^(A)	
Best	12.4 min/page on D/A1 or up to 27.76 ft ² /hr (2.58 m ² /hr) on glossy media
Normal	7.2 min/page on D/A1 or up to 47.55 ft ² /hr (4.42 m ² /hr) on glossy media 3.8 min/page on D/A1 or up to 92.43 ft ² /hr (8.59 m ² /hr) on coated media
Draft	2 min/page on D/A1 or up to 182.93 ft ² /hr (16.99 m ² /hr) on coated media
Printing	
Print resolution	Up to 2400 x 1200 optimized dpi
Margins	Roll: 0.2 x 0.2 x 0.2 x 0.2 in/5 x 5 x 5 mm (borderless available on glossy/satin roll media)
(top x bottom x left x right)	Sheet: 0.2 x 0.67 x 0.2 x 0.2 in/5 x 17 x 5 x 5 mm
Technology	HP Thermal Inkjet
Ink types	HP Vivera pigment inks
Ink colors	12: blue, green, magenta, chromatic red, yellow, gray, photo black, matte black, light cyan, light gray, light magenta, gloss enhancer
Ink drop	4 pl (l, lm, lg, pK, E, G), 6 pl (M, Y, mR, K, GN, B)
Ink cartridge size	130 ml
Printheads	6
Nozzles	2112 per printhead (2 colors per printhead, 1056 nozzles per color)
Lightfastness	Approximately 200 years ^(B) fade resistance
Water resistance	Water-resistant on a range of HP creative and specialty media
Image quality	
Color accuracy	Median < 1.6 dE2000, 95% of colors < 2.8 dE2000 ^(C)
Short term color stability	< 1 dE2000 in less than 5 minutes ^(D)
Print-to-print repeatability	Average < 0.5 dE2000, 95% of colors < 1.4 dE2000 ^(D)
Maximum optical density	4 L* min / 2.5 D ^(E)
Media	
Handling	Sheetfeed, roll feed, automatic cutter (cuts all media except canvas)
Types	Photographic, proofing, fine art printing material, self-adhesive, banner and sign, bond and coated, film, backlit, fabric/textile
Weight	Up to 133 lb (500 g/m ²)
Size	24-in models: 8.5 x 11 to 24 x 66 in (216 x 279 to 610 x 1676 mm) sheets; 11 to 24 in (279 to 610 mm) rolls 44-in models: 8.5 x 11 to 44 x 66 in (216 x 279 to 1118 x 1676 mm) sheets; 11 to 44 in (279 to 1118 mm) rolls
Thickness	Up to 31.5 mil (0.8 mm)
Memory	
	256 MB standard memory, 80 GB hard disk
Connectivity	
Interfaces (standard)	1 10/100Base-T Ethernet RJ-45 port (1000Base-T for ps models), 1 Hi-Speed USB 2.0 certified port, 1 EIO Jetdirect accessory slot
Interfaces (optional)	HP Jetdirect EIO print servers
Print languages	HP Designjet Z3200: HP PCL 3 GUI HP Designjet Z3200ps: Adobe® PostScript® 3™, Adobe PDF 1.6, TIFF, JPEG, HP PCL 3 GUI
Supported operating systems	
	Windows® XP Home, XP Professional, XP Professional x64, Vista®, Server 2003, Mac OS X v 10.4 and 10.5
Dimensions (w x d x h)	
Printer with stand ^(F)	24-in models: 49.7 x 27.2 x 41.2 in (1262 x 690 x 1047 mm) 44-in models: 69.7 x 27.2 x 41.2 in (1770 x 690 x 1047 mm)
Shipping	24-in models: 57.8 x 30.7 x 29.1 in (1470 x 780 x 740 mm) (NA, LAR, EMEA) 65.3 x 30.3 x 23.2 in (1660 x 770 x 590 mm) (AP) 44-in models: 77.3 x 30.7 x 30.7 in (1965 x 780 x 780 mm)
Weight	
Printer with stand ^(F)	24-in models: 143 lb (65 kg) 44-in models: 189 lb (86 kg)
Shipping	24-in models: 225 lb (102 kg) (NA, LAR, EMEA); 88.5 kg (195) (AP) 44-in models: 271 lb (123 kg)

What's in the box

HP Designjet Z3200 Photo Printer, spindle, printheads (6 x 2 colors), introductory ink cartridges (x12), Original HP media roll, stand^(F), rear tray, adaptor kit (3 in) for spindle (x2), quick reference guide, setup poster, USB cable, power cord, HP Start-up kit including printer software, HP Advanced Profiling Solution (PostScript models only)

- (A) Mechanical printing time. Measured on a 44-in model.
(B) Display permanence rating by Wilhelm Imaging Research, Inc. on a range of HP creative and specialty media. See www.hp.com/go/supplies/printpermanence
(C) ICC absolute colorimetric accuracy on HP Proofing Matte paper
(D) With HP Premium Instant Dry Photo Satin media, right after calibration
(E) With HP Premium Instant Dry Photo Gloss media
(F) Stand not included in the box in Asia Pacific for 24-in models

Environmental ranges	
Operating temperature	41 to 104° F (5 to 40° C)
Recommended operating temperature	59 to 95° F (15 to 35° C)
Storage temperature	-13 to 131° F (-25 to 55° C)
Recommended operating humidity	20 to 80% RH
Storage humidity	0 to 95% RH
Acoustic	
Sound pressure, active	49 dB(A)
Sound pressure, standby	29 dB(A)
Sound power, active	6.5 B(A)
Sound power, standby	4.4 B(A)
Power consumption	
Maximum	200 watts
Power requirements	Input voltage (auto-ranging): 100 to 240 V ac (+/- 10%), 50/60 Hz (+/- 3 Hz), 2 amps max
Certification	
Safety	IEC 60950-1 compliant, EU LVD and EN 60950-1 compliant, certified by CSA for Canada and US, Argentina IIRAM, Singapore PSB, Russia GOST, China CCIB, Taiwan BSMI
Electromagnetic	Compliance for Class B products: EU (EMC Directive), USA (FCC rules), Canada (DoC), Australia (ACA), New Zealand (MoC), China (CCC), Japan (VCCI), Korea (MIC) and Taiwan (BSMI) see: http://www.hp.com/go/energystar
ENERGY STAR® qualified models	
Warranty	
Warranty Support call 1-800-HP-INVENT	One-year warranty with onsite, next business-day service

Ordering information

Product	
Q6718A	HP Designjet Z3200 24-in Photo Printer
Q6719A	HP Designjet Z3200 44-in Photo Printer
Q6720A	HP Designjet Z3200ps 24-in Photo Printer
Q6721A	HP Designjet Z3200ps 44-in Photo Printer
Accessories	
Q6695A	HP Advanced Profiling Solution Software
Q6700A	HP Designjet Z2100 and Z3x00 24-in Spindle
Q6699A	HP Designjet Z2100 and Z3x00 44-inch Spindle for Graphics
Printheads	
C9405A	HP 70 Light Magenta & Light Cyan Printhead
C9406A	HP 70 Magenta & Yellow Printhead
C9407A	HP 70 Photo Black & Light Gray Printhead
C9408A	HP 70 Blue & Green Printhead
CD949A	HP 73 Matte Black & Chromatic Red Printhead
C9410A	HP 70 Gloss Enhancer & Gray Printhead
Ink cartridges	
C9448A	HP 70 Matte Black 130 ml Ink Cartridge
C9449A	HP 70 Photo Black 130 ml Ink Cartridge
C9450A	HP 70 Gray 130 ml Ink Cartridge
C9451A	HP 70 Light Gray 130 ml Ink Cartridge
C9453A	HP 70 Magenta 130 ml Ink Cartridge
C9454A	HP 70 Yellow 130 ml Ink Cartridge
C9455A	HP 70 Light Magenta 130 ml Ink Cartridge
CD951A	HP 73 Chromatic Red 130 ml Ink Cartridge
C9457A	HP 70 Green 130 ml Ink Cartridge
C9458A	HP 70 Blue 130 ml Ink Cartridge
C9459A	HP 70 Gloss Enhancer 130 ml Ink Cartridge
C9390A	HP 70 Light Cyan 130 ml Ink Cartridge

Media

Q8840A	HP Professional Satin Photo Paper 300 g/m ² - 44 in x 50 ft/1118 mm x 15.2 m
Q7991A	HP Premium Instant-dry Gloss Photo Paper 260 g/m ² - 24 in x 75 ft/610 mm x 22.9 m
Q7992A	HP Premium Instant-dry Satin Photo Paper 260 g/m ² - 24 in x 75 ft/610 mm x 22.9 m
Q8916A	HP Everyday Pigment Ink Gloss Photo Paper 235 g/m ² - 24 in x 100 ft/610 mm x 30.5 m
Q8920A	HP Everyday Pigment Ink Satin Photo Paper 235 g/m ² - 24 in x 100 ft/610 mm x 30.5 m
CG459A	HP Premium Matte Photo Paper 210 g/m ² - 24 in x 100 ft/610 mm x 30.5 m
CG803A	HP Baryte Satin Art Paper 290 g/m ² - 24 in x 50 ft/610 mm x 15.2 m
CG804A	HP Baryte Satin Art Paper 290 g/m ² - 44 in x 50 ft/1118 mm x 15.2 m
Q7972A	HP Matte Litho-realistic Paper 270 g/m ² - 24 in x 100 ft/610 mm x 30.5 m
Q8708A	HP Collector Satin Canvas 400 g/m ² - 24 in x 20 ft/610 mm x 6.1 m
Q8673A	HP Professional Matte Canvas 430 g/m ² - 24 in x 20 ft/610 mm x 6.1 m
Q8706A	HP Artist Matte Canvas 380 g/m ² - 42 in x 50 ft/1067 mm x 15.2 m
Q8732A	HP Hahnemühle Smooth Fine Art Paper 265 g/m ² - 24 in x 35 ft/610 mm x 10.7 m
Q8741A	HP Aquarella Art Paper 240 g/m ² - 24 in x 35 ft/610 mm x 10.7 m
Q8740A	HP Hahnemühle Textured Fine Art Paper 310 g/m ² - 42 in x 35 ft/1067 mm x 10.7 m
Q7971A	HP Professional Semi-gloss Contract Proofing Paper 235 g/m ² - 24 in x 100 ft/610 mm x 30.5 m
Q6626A	HP Super Heavyweight Plus Matte Paper 210 g/m ² - 24 in x 100 ft/610 mm x 30.5 m
C6030C	HP Heavyweight Coated Paper 131 g/m ² - 36 in x 100 ft/914 mm x 30.5 m
Q8748A	HP Premium Vivid Color Backlit Film 285 g/m ² - 42 in x 100 ft/1067 mm x 30.5 m
CG815A	HP PVC-free Banner 410 g/m ² - 36 in x 50 ft (974 mm x 15.2 m)

HP Care Pack Services

UF035E	3-Year Next Business Day Onsite
UF036E	4-Year Next Business Day Onsite
UF037E	5-Year Next Business Day Onsite
H4518E	HP Installation with Network Setup

For more service options visit: www.hp.com/go/lookuptool
HP Care Pack Services call 1-800-633-3600 for service.

For more HP Large Format Media substrates and sizes please visit us online at: www.hp.com/go/designjet



Footnotes

- Embedded in this HP Designjet Photo Printer is an i1 spectrophotometer from X-Rite. Close collaboration between HP and X-Rite ensures a reliable solution that's been thoroughly tested to meet customer demands for ease, quality, and dependability.
- Based on internal HP testing, the HP Designjet Z3200 Photo Printer series utilizes at least 30% less ink during routine maintenance operations versus select printers from other vendors.
- Image permanence estimates by HP Image Permanence Lab based on testing on a range of HP photo, fine art, and specialty papers: confirmation tests in progress at Wilhelm Imaging Research, Inc. For details, see www.hp.com/go/supplies/printpermanence.
- Bronzing is minimized as an image-quality issue when HP gloss enhancer is used. HP gloss enhancer can be used on photo paper, with the exception of matte-finish papers.
- 95% coverage of PANTONE MATCHING SYSTEM® and PANTONE Goe™ System, based on HP internal testing (PANTONE approval pending). Please visit www.hp.com/go/Z3200/PANTONE for final results.
- Visit www.hp.com/go/Z3200/paperpresets to find paper presets for HP and other commercially available media.
- Avoid double color management when using Adobe Photoshop CS3 Improved Printing Experience—co-developed by HP—for both Mac and Windows Vista. Check www.hp.com/go/Z3200/solutions for more details on the exact configurations supported.
- HP Professional PANTONE Emulation, HP Advanced Profiling Solution, remote management, queue management, nesting, job submission and storage capabilities, and support for 16-bit TIFF and JPEG files are standard on HP Designjet Z3200ps Photo printers only. HP Advanced Profiling Solution is also available as an accessory for HP Designjet Z3200 Photo Printers.

For more information, visit our website at www.hp.com/go/designjetZ3200



© Copyright 2008 Hewlett-Packard Development Company, LP. The information contained herein is subject to change without notice. The only warranties for HP products and services are set forth in the express warranty statements accompanying such products and services. Nothing herein should be construed as constituting an additional warranty. HP shall not be liable for technical or editorial errors or omissions contained herein. Windows Vista and Windows XP are U.S. registered trademarks of Microsoft Corporation. ENERGY STAR and the ENERGY STAR mark are registered U.S. marks. Adobe, Adobe Photoshop, Adobe PostScript 3, and PostScript are trademarks of Adobe Systems Incorporated. PANTONE and other Pantone, Inc. trademarks are the property of Pantone, Inc. PANTONE Colors displayed herein may not match PANTONE-identified standards. Consult current PANTONE Color Publications for accurate color.